



Technical Catalogue



FLF-KX Series

Stainless steel corrosion resistant split self priming pump

Use

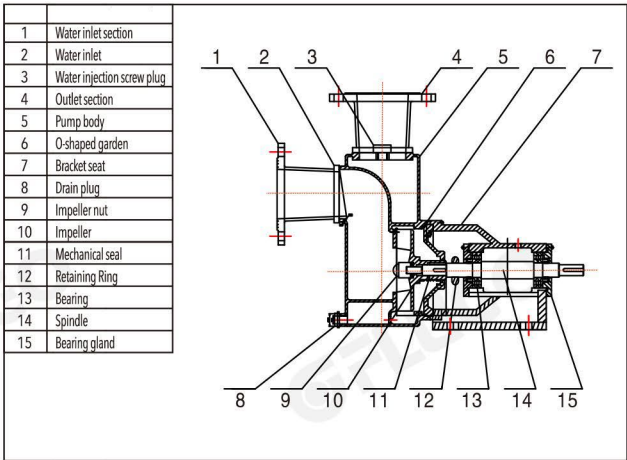
For cleaning system, food processing, pharmaceutical chemical, sewageLi, electroplating bleaching, fine chemicals and environmental protection works.

The material

The water pump has been made of 304 or 316L stainless steel materials

Mainly applied on
Food processing
Pharmaceutical Chemicals
The electroplating and dyeing
Sewage treatment
Environmental Engineering

The product diagram



Model specification

FLF (2) (B) 40 KX-18-D

- D. single-phase electrode
No sign of three-phase motor
- The designed head(m)
- Self suction split structure
- Diameter of suction(mm)
- Optional YB3 flameproof motor
- Optional YE3 high efficiency energy saving motor
- Stainless steel corrosion resistant pump

performance

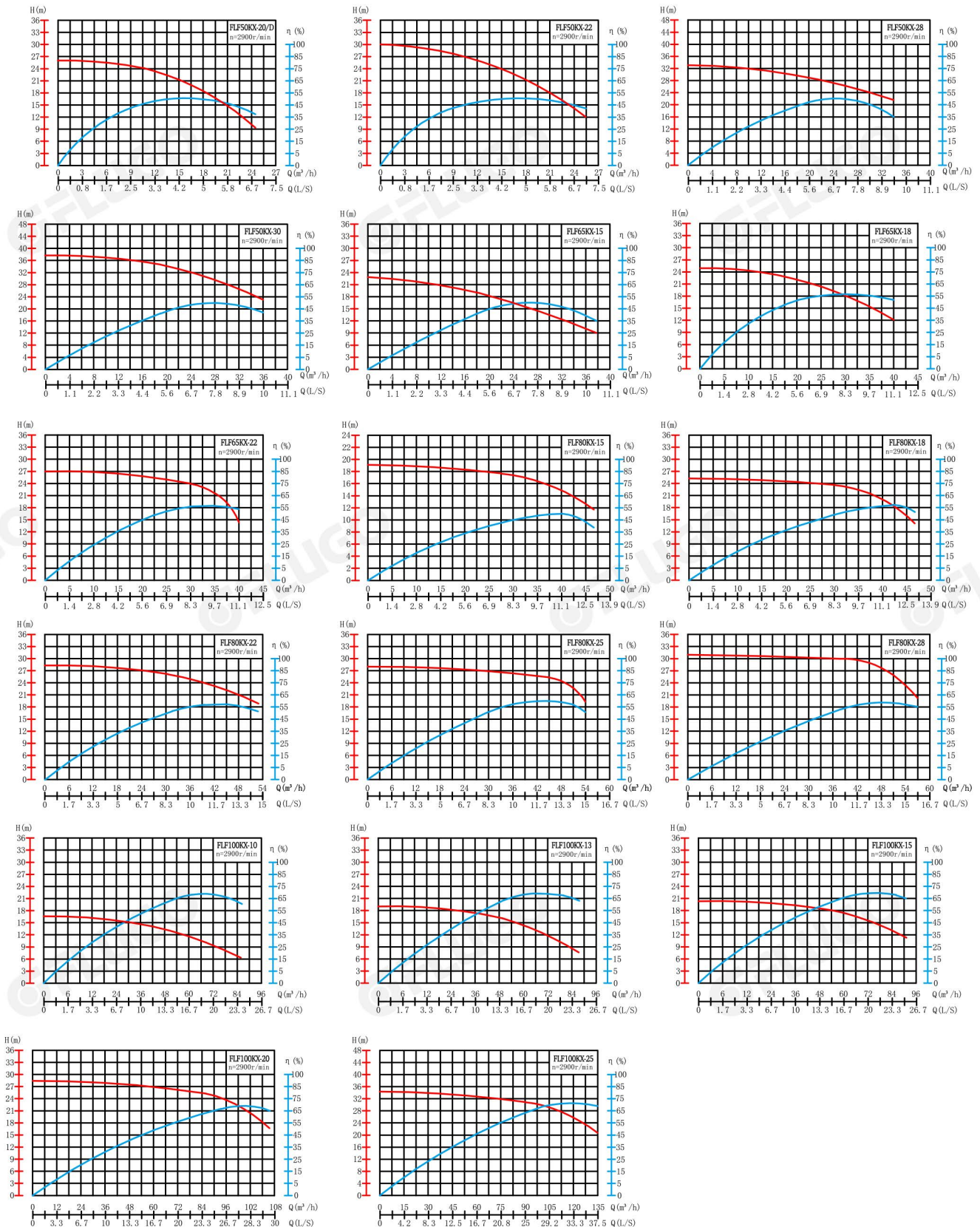
Use open impeller. It can process sewage and contain fine debris Liquid, after the first use of water injection, no need to add before each bootWater injection. Medium temperature: 20 °C to 120 °C epdm/F46Fluorinated plastic fluorinated rubber/silicon carbide/alloy/mechanical seal



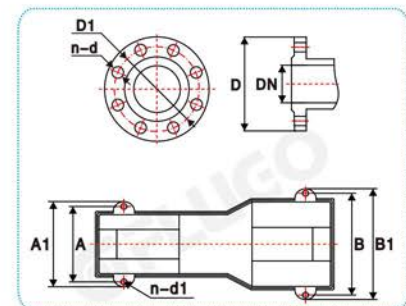
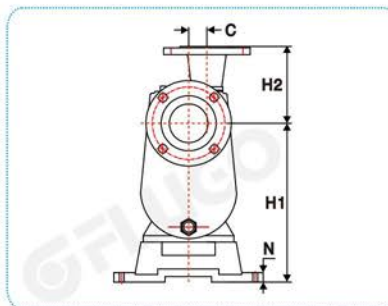
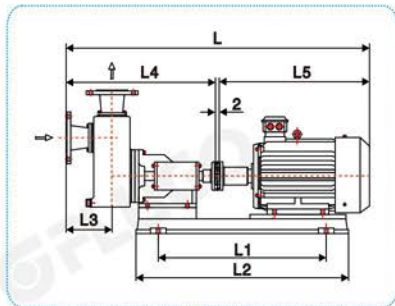
Technical parameter list

									2900r/min
Model	Flow Q		Heab H (m)	Power (KW)	Revn (r/min)	Calider (mm)		Voltage (V)	(NPSH) (m)
	m³/h	L/s				In	Out		
FLF50KX-20/D	7.8	2.17	25	2.2	2840	50	50	380/220	4.0
	16.5	4.58	20						
	22	6.11	13						
FLF50KX-22	8.5	2.36	28	3	2880	50	50	380/220	4.0
	16.5	4.58	22						
	24	6.67	14						
FLF50KX-28	17.5	4.86	31	4	2890	50	50	380	4.0
	22	6.11	28						
	21	8.61	25						
FLF50KX-30	19	5.28	35	5.5	2900	50	50	380	4.0
	28	7.78	30						
	33	9.17	26						
FLF65KX-15	18	5	20	4	2890	65	65	380	4.0
	26	7.22	15						
	36	10	11						
FLF65KX-18	31	5.83	23	5.5	2900	65	65	380	4.0
	30	8.33	18						
	39	10.8	14						
FLF65KX-22	22.5	6.25	26	7.5	2900	65	65	380	4.0
	35	9.72	22						
	40	11.1	13						
FFLF80KX-15	33	9.17	17	4	2890	80	80	380	4.0
	38	10.6	15						
	43	11.9	13						
FLF80KX-18	35	9.72	23	5.5	2900	80	80	380	4.0
	42	11.7	18						
	45	12.5	16						
FLF80KX-22	32	8.89	26	7.5	2900	80	80	380	4.0
	45	12.5	22						
	50	13.9	20						
FLF80KX-25	32.5	9.03	27	11	2930	80	80	380	4.0
	48	13.3	25						
	52	14.4	22						
FLF80KX-28	38	10.6	30	15	2900	80	80	380	4.0
	48	13.3	28						
	52	14.4	25						
FLF100KX-10	49	13.6	14	4	2900	100	100	380	4.0
	60	16.7	10						
	80	22.2	8						
FLF100KX-13	52	14.4	16	5.5	2900	100	100	380	4.0
	65	18.1	13						
	80	22.2	11						
FLF100KX-15	55	15.3	18	7.5	2900	100	100	380	4.0
	75	20.8	15						
	85	23.6	13						
FLF100KX-20	91	25.3	25	11	2900	100	100	380	4.0
	100	27.8	20						
	105	29.2	18						
FLF100KX-25	100	27.8	30	15	2900	100	100	380	4.0
	120	33.3	25						
	131	36.4	23						

Performance graph



FLF bracket self-priming pump mounting dimensions



Installation size list

(mm) 2900r/min

Model	Outline dimensions															Import and export flange dimensions								Power (KW)
	L	L1	L2	L3	L4	L5	A	A1	B	B1	C	H1	H2	N	n-d1	DN	D1	D	n-d	DN	D1	D	n-d	
FLF50KX-20/D	852	410	600	120	470	380	250	300	250	300	42	290	155	15	4-φ6	G2寸				G2寸				2.2
FLF50KX-22	862	445	630	120	470	390	250	310	280	330	42	305	155	15	4-φ6	G2寸				G2寸				3
FLF50KX-28	900	445	630	135	487	410	250	310	310	330	50	350	155	15	4-φ6	G2寸				G2寸				4
FLF50KX-30	974	510	680	135	487	485	230	270	330	380	50	350	155	20	4-φ6	G2寸				G2寸				5.5
FLF65KX-15	972	445	630	140	515	410	250	310	310	330	45	305	160	15	4-φ6	65	145	185	4-φ16	65	145	185	4-φ16	4
FLF65KX-18	1000	510	680	140	515	485	230	270	330	380	45	305	160	20	4-φ6	65	145	185	4-φ16	65	145	185	4-φ16	5.5
FLF65KX-22	1000	510	680	140	515	485	230	270	330	380	45	305	160	20	4-φ6	65	145	185	4-φ16	65	145	185	4-φ16	7.5
FFLF80KX-15	927	445	630	140	515	410	250	310	310	330	45	305	160	15	4-φ6	80	160	200	8-φ18	80	160	200	8-φ18	4
FLF80KX-18	1000	510	680	140	515	485	230	270	330	380	45	305	160	20	4-φ6	80	160	200	8-φ18	80	160	200	8-φ18	5.5
FLF80KX-22	1000	510	680	140	515	485	230	270	330	380	45	305	160	20	4-φ6	80	160	200	8-φ18	80	160	200	8-φ18	7.5
FLF80KX-25	1127	610	790	165	515	610	250	300	400	450	45	345	160	20	4-φ8	80	160	200	8-φ18	80	160	200	8-φ18	11
FLF80KX-28	1127	610	790	165	515	610	250	300	400	450	45	345	160	20	4-φ8	80	160	200	8-φ18	80	160	200	8-φ18	15
FLF100KX-10	1000	445	630	180	590	410	250	310	310	330	30	350	175	15	4-φ6	100	180	220	8-φ18	100	180	220	8-φ18	4
FLF100KX-13	1077	510	680	180	590	485	230	270	330	380	30	350	175	20	4-φ6	100	180	220	8-φ18	100	180	220	8-φ18	5.5
FLF100KX-15	1077	510	680	180	590	485	230	270	330	380	30	350	175	20	4-φ6	100	180	220	8-φ18	100	180	220	8-φ18	7.5
FLF100KX-20	1200	610	790	180	590	610	250	300	400	450	30	370	175	20	4-φ8	100	180	220	8-φ18	100	180	220	8-φ18	11
FLF100KX-25	1200	610	790	180	590	610	250	300	400	450	30	370	175	20	4-φ8	100	180	220	8-φ18	100	180	220	8-φ18	15



Authorized Distributor

FLF-KX Series
Stainless steel corrosion resistant
split self priming pump